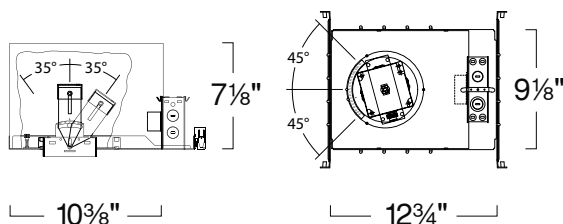


## 3" 12W/600Lm & 19W/1,200Lm Mini-Arc Square LED Housing (Dimmable) w/ Square Lensed Wall Wash/ 3" MINI-ARC SQUARE LED LIGHTING



### SPECIFICATION

Ceiling cut-out: 3 1/2" Square

**Application:** Mini-Arc<sup>2</sup> Phantom 3" Square LED Downlight Housings are designed for low to medium ceiling heights in retail, hospitality, commercial and high-end residential applications. Advanced 'hot-aiming' mechanism allows precise and lockable positioning of the square trim prior to drywall or ceiling panel installation. Post installation adjustment of the beam tilt is possible from below the fixture. Housing works with standard 3" Square trims and 3" Square 'Trimless' trims.

**Adjustability:** Collar bracket provides 90° of rotation, marked in 5° increments for positioning before drywall installation. Lamp holder assembly allows 35° tilt and 1-1/2" vertical lamp source adjustment.

**Housing:** Collar bracket adjusts for 1/2" to 1" ceiling thickness. Integral thermal protector guards against improper installation. Trim is secured with 4 torsion spring clips.

**Warm Dimming:** With this new technology, you can create the warm glow of traditional incandescent dimming while offering extraordinary energy efficiency and service life of LED Lighting. Allow for fixture start at a full 2700K when at full-brightness and smoothly dim down to 5% level with the warm glow of 1850K using dimming option the frame-in kit.

**Mounting:** Housing suitable for new construction installations only, supplied with (2) 24" adjustable hanger bars with 90 degrees repositioning ability. Hanger bars equipped with nail-less install 3/4" serrated barbed studs and with captive nails, for faster and easier secure mounting in wood joists. Set-screws lock into position and prevent shifting after installation. Earthquake structural cable compatible for drop panel ceiling or any other mounting that requires direct support from structural ceilings.

**Driver:** Electronic Direct Current LED driver integrally mounted in electric junction box.

**Dimming:** 0-10V dimming option (-D10) works with most 5-Wire 0-10V dimmers. UniDim™ (-DUN) option is a universal dimming system that works with most 3-Wire ELV, 2-Wire Incandescent and 5-Wire 0-10V fluorescent dimmers.

**Power Connection:** LED lamp array is replaceable via on board quick disconnect terminal. Meets CA Title 24 Requirements and other standards restricting the use of Medium Base or Bi-Pin Sockets.

**Junction Box :** 16 gauge pre-wired galvanized steel Junction Box, 32 cubic-inch for a maximum of (8) #12 AWG wires. Furnished with (7) 3/4" and (4) Romex knock-outs. Strain clamps to install or remove covers for easy access and ground wire. Equipped with safety standard fitting for flex-conduit.

### FEATURE:

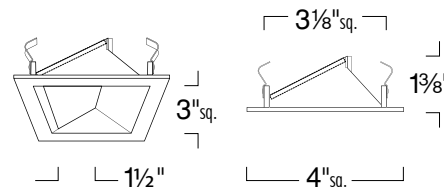


**Application:** Mini-Arc<sup>2</sup> - 3" Square Trims feature fully die-cast, seamless construction insuring long lasting beauty and durability. They are designed for low to medium ceiling heights in retail, hospitality, commercial and high-end residential applications that benefit from linearity and symmetry in modern interior lighting designs.

**Trim Construction:** Trim is built of solid die-cast aluminum for long lasting beauty and durability.

**Lens:** Frosted lens controls glare and eliminates view of lamp. Built-in hinge allows easy access to lamp mechanism and facilitates trim removal.

**"Mounting:** Steel pressure springs mounted on trim to ensure positive retention inside housing. Cable tether secures trim to housing for easy maintenance. For trimless applications mud flange provided with LRX style reflector can be attached to bottom of ceilings up to 2" thick. "



### 3" 12W/600LM & 19W/1,200LM MINI-ARC SQUARE LED HOUSING (DIMMABLE) LHQLD3 12W/19W

WATTAGE	OPTIONS	BEAM SPREAD	LED
LHQLD312C35 :12W	Blank :120V Non-Dimming	Blank :45° Narrow Flood	Blank :3000K
LHQLD319C70 :19W ^	UE :120V/277V	-B25 :Spot*	-C90 :3000K, 90CRI
	UE-D10 :120V/277V 0-10V****	-B60 :60° Wide Flood	-C97 :3000K, 97CRI**
	UE-DUN :120V-277V UniDim™++		-T17 :1700K*
	-DIN :120V Incandescent Dimming		-T25 :2500K*
	-EM :Remote 5W Emergency+		-T27 :2700K
	-347-D10 :0-10V 10% Dimming		-T27-C90 :2700K 90 + CRI
			-T27-C97 :2700K 97CRI**
			-T35 :3500K
			-T40 :4000K
			-TWD :1850K-2700K Warm Dimming****

### SQUARE LENSED WALL WASH/SLOPED LRQ371

LRQ371	FINISH	RATING
LRQ371	W :White	Blank :Damp Location
	BB :All Black	-WL :Wet Location

Ordering example: LHQLD312C35UE-DUN-B25-TWD/LRQ371W

\* Extended lead time may apply. Consult factory. \*\*Only Available in 2700K and 3000K. \*\*\*For lensed version only. \*\*\*\*Only for 12W.  
^ Not rated for Insulation Contact. + Above ceiling access required for EM option. ++ Extended lead may apply for quantities over 100.

**3" LED Downlight Luminaire**

Total Luminaire Watts :19W

Color Redering Index(CRI) :80

Color Temperature :3,072K

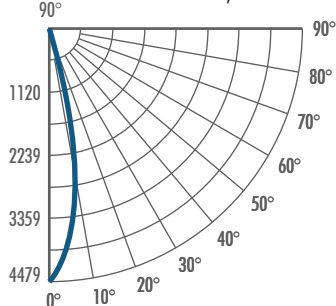
Estimated Life :50,000 + hrs. -L70

**MULTIPLIERS****COLOR TEMP**

2,700K	0.97
3,000K	1.00
3,500K	1.01
4,000K	1.03

**LHQLD319C70-B25 LED LUMINAIRE****CANDELA TABULATION**

:4474.821, CBCP

**ZONAL LUMENS SUMMARY**

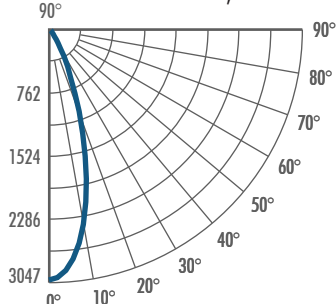
Zone	Lumens	% Fixt
0 - 20	773.72	55.00
0 - 30	1000.64	78.20
0 - 40	1292.48	91.90
0 - 60	1379.14	98.00
0 - 80	1403.03	99.70
0 - 90	1407.03	100.00

**RECOMMENDED LAYOUT**

Height	Spacing	FC	Min/Max
8'	6 X 6	48	2.5:1
10'	6 X 6	45	1.9:1
12'	6 X 6	44	1.9:1
10'	8 X 8	25	2.2:1
12'	8 X 8	24	2.0:1

**LHQLD319C70 LED LUMINAIRE****CANDELA TABULATION**

:3047.350, CBCP

**ZONAL LUMENS SUMMARY**

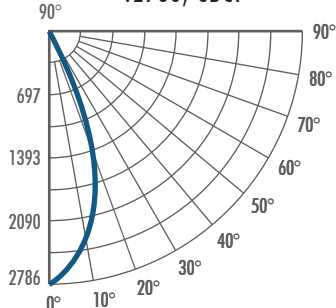
Zone	Lumens	% Fixt
0 - 20	734.55	64.00
0 - 30	1010.43	88.00
0 - 40	1103.30	96.10
0 - 60	1145.59	99.80
0 - 80	1148.21	100.00
0 - 90	1148.43	100.00

**RECOMMENDED LAYOUT**

Height	Spacing	FC	Min/Max
12'	6 X 6	20	1.7:1
8'	8 X 8	38	2.0:1
10'	8 X 8	37	1.3:1

**LHQLD319C70-B60 LED LUMINAIRE****CANDELA TABULATION**

:2786, CBCP

**ZONAL LUMENS SUMMARY**

Zone	Lumens	% Fixt
0 - 20	702.33	55.10
0 - 30	1020.72	80.10
0 - 40	1162.13	91.20
0 - 60	1248.21	98.00
0 - 80	1266.76	99.40
0 - 90	1274.06	100.00

**RECOMMENDED LAYOUT**

Height	Space	FC	Min/Max
8'	6 X 6	40	1.7:1
10'	6 X 6	40	1.2:1
12'	6 X 6	39	1.1:1
10'	8 X 8	22	2.1:1
12'	8 X 8	22	1.4:1