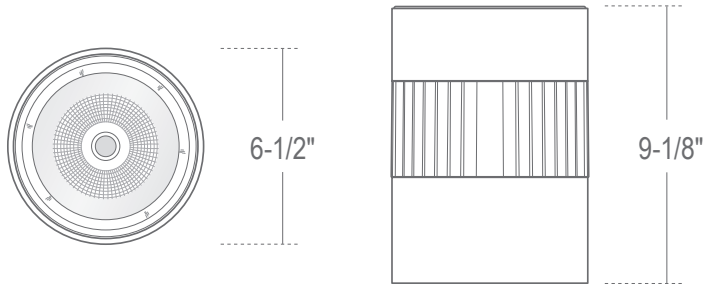


LCALD6X11 : 6" LUMEN CANNON LED PENDANT/ CEILING MOUNT 11,000LM (125W)

- 120V/277V Input Standard
- Exclusive UniDim™ Universal LED Dimming Option Works with 0-10V, ELV and Incandescent Controls
- Weighs less than 8lb
- 90 CRI Standard



ORDERING – Example: LCALD6X11B-B15-DUN-T27



LCALD6X11

Fixture	Finish	Beam Spread	Dimming	Color Temperature	
Finish		Beam Spread	Dimming		
White/Black Fins	Blank	Spot	-B15	Non-Dimming 120V/277V	Blank
Silver/Black Fins	S	Flood	-B40	UniDim™ 120V/277V, 0-10V, ELV and Incandescent Controls	-DUN
All Black	B	Wide Flood	-B70	Color Temperature	
				2700K	-T27
				3000K	-T30
				3500K	-T35
				4000K	-T40

347V Input with 0-10V Dimming available. Consult factory for lead times.

MOUNTING ACCESSORIES

LPCMC6/LPCMCJ6
 Cable Extension Kit
 for flat or sloped ceilings



LPCM6/LPCMJ6
 Pendant Accessory
 for flat or sloped ceilings



LPCMQ6
 Square Ceiling
 Adapter



LPTM6-3C1N
 Track Mount



LPCMC-CLAMP
 Clamp Mount



LPCMC-HUB
 Thread Hub
 for pipe mounting



See p. 3 for ordering and more detailed information on Mounting Accessories

SPECIFICATION

Application

Architectural-grade pendant/ceiling mount LED downlight housing for medium to high ceilings combines energy efficiency with powerful lumen output. Perfect for atriums, churches, lobbies, and airports that have high ceilings.

Housing

Spun steel with die-cast aluminum heat sink.

Mounting - Universal mounting hardware allows mounting to all standard electrical junction boxes. Optional pendant cable and wall mount assemblies available. Weighs less than 8lb..

Reflector

Multifaceted Specular Reflector.

Optics

LED Light Engine - COB (Chip on Board)
Meets CA Title 24 Requirements and other standards restricting the use of Medium Base or Bi-Pin Sockets.

Color Temperature - Available in 2700K, 3000K, 3500K, & 4000K. Fixtures come with 90 CRI Standard.

Beam Spread - Also available in B15 - 15° Spot, B40- 40° Flood and B70 - 70° Wide.

Lumen Maintenance - Minimum 50,000 hours L70 life based on ANSI TM-21 calculations from LM80 standardized test results.

Electrical Components

Thermal Management - Heat dissipation facilitated by exposed integral aluminum black heat sink to maximize heat rejection in an open air environment. Recommended ambient temperature is below 35°C to achieve minimum L70 life of 50,000 hours according to LM80 standard.

Driver - 120V/277V AC 50/60Hz
Electronic Direct Current Class 2 driver integrally mounted on large access Junction Box. Power Factor > 0.90.
Operating Temperature: -10°C to +80°C.
Accessible from above or below ceiling. Consult Factory for dimming options and compatible dimmers.

Dimming - (-DUN) option is a universal dimming system that works with most 3-Wire ELV, 2-Wire Incandescent and 5-Wire 0-10V fluorescent dimmers.

Finishes

High quality powder coat finish for maximum durability. Available in all Black, White with Black Fins, Silver with Black Fins. Consult factory for Custom Color.

Certifications and Listings

ETL/cETL listed to UL1598 and UL8750.
Suitable for dry and damp locations.
NYC approved: Calendar #41937.
For Wet Location, see DL series.
Assembled in USA.

Caution

Fixtures must be grounded in accordance with national, state and/or local electrical codes. Failure to do so may result in serious personal injury.

Warranty

Covered by a 5-Year Warranty to be free of defects in materials and craftsmanship. Fixture should not be installed in applications with ambient temperature above 60°C. Doing so will result in reduced lamp life and voided warranty.

Mounting Accessories

ORDERING – Example: LPCM612W-2CCT

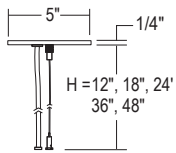
Ordering Fixture Finish Options

Mounts to standard electrical J-Box. Field adjustable.
4-Wire electrical cable for dimming and non-dimming
installations. Aircraft-grade cable.

Cable Extension Kit

Ordering		Fixture Finish		Options	
72"	LPCM672	White	W	None	Blank
120"	LPCM6120	Black	B	2-Circuit	-2CCT
250"	LPCM6250			Wall Plug Adapter	-PI

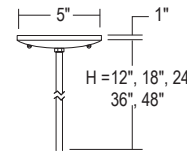
5° Max Slope Ceiling



Mounts to standard electrical J-Box.

Pendant Accessory for Flat Ceilings

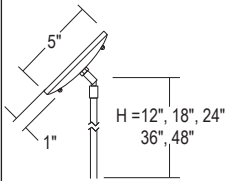
Ordering		Fixture Finish		Options	
12" Extension	LPCM612	White	W	None	Blank
18" Extension	LPCM618	Black	B	2-Circuit	-2CCT
24" Extension	LPCM624	Natural	N	Wall Plug Adapter	-PI
36" Extension	LPCM636				
48" Extension	LPCM648				



Mounts to standard electrical J-Box.

Pendant Accessory for Sloped Ceilings

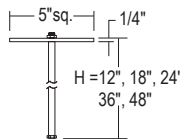
Ordering		Fixture Finish	
12" Extension	LPCM612	White	W
18" Extension	LPCM618	Black	B
24" Extension	LPCM624	Natural	N
36" Extension	LPCM636		
48" Extension	LPCM648		



Mounts to standard electrical J-Box.

Square Ceiling Adapter

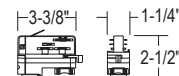
Ordering		Fixture Finish	
12" Extension	LPCM612	White	W
18" Extension	LPCM618	Black	B
24" Extension	LPCM624		
36" Extension	LPCM636		
48" Extension	LPCM648		



Mounts to LITON 3C/1M Multi-circuit
Architectural Track for easy installation.

Track Mount for 6" Lumen Cannon

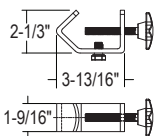
Ordering	
White	LPTM6W-3C1N
Black	LPTM6B-3C1N



Mounts to Piping and Truss systems up to 2" side. Power
Cable not Included. Consult factory for wiring options.

Clamp Mount

Ordering	
White	LPCM-CLAMPW
Black	LPCM-CLAMPB



Thread Hub for Pipe Mounting for LCALD4 and LCALD6.

Thread Hub for Pipe Mounting

Ordering	
1/2"	LPCM-HUB-1/2
3/4"	LPCM-HUB-3/4
1"	LPCM-HUB-1

