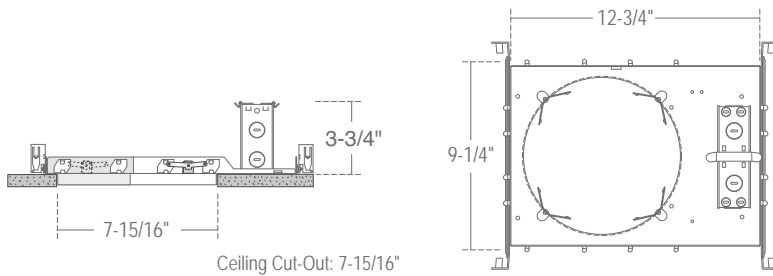


CH8-FRM : 8" C·SERIES

NEW CONSTRUCTION HOUSING FRAME



SPECIFICATION

Application: Commercial-grade recessed LED downlight housing for medium to high ceilings in commercial and architectural spaces.

Mounting: : Housing suitable for new construction installations only, supplied with (2) 24" adjustable hanger bars with 90 degrees repositioning ability. Hanger bars equipped with nail-less install 3/4" serrated barbed studs and with captive nails, for faster and easier secure mounting in wood joists. Set-screws lock into position and prevent shifting after installation. Earthquake structural cable compatible for drop panel ceiling or any other mounting that requires direct support from structural ceilings.

Safety Labels: ETL/cETL listed to UL1598 and UL8750. Suitable for dry, damp and wet locations. NYC approved: Calendar #41937.

COMPATIBILITY

LRCLD802	LRCLD802	LRALD8
8" ARCHITECTURAL SHALLOW LED RETROFIT 1200/1900LM	8" COMMERCIAL LED SHALLOW LED RETROFIT 1300LM	8" ARCHITECTURAL LED RETROFIT 1400/2000/3000/4000LM

Note: Wattage limitations on compatible items must be met.

FEATURE:

