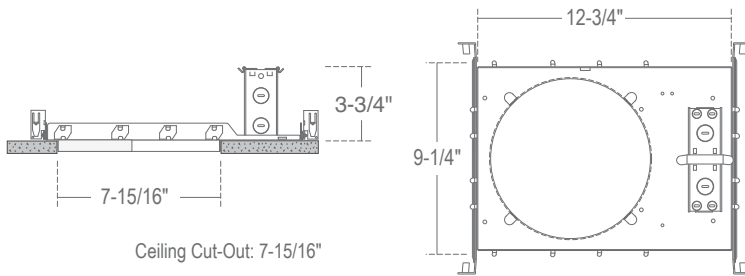


## CH8-FRM-NCLP : 8" C-SERIES NEW CONSTRUCTION HOUSING FRAME (NON-CLIP)



### SPECIFICATION

**Application:** Commercial-grade recessed LED downlight housing for medium to high ceilings in commercial and architectural spaces.

**Mounting:** Housing suitable for new construction installations only, supplied with (2) 24" adjustable hanger bars with 90 degrees repositioning ability. Hanger bars equipped with nail-less install 3/4" serrated barbed studs and with captive nails, for faster and easier secure mounting in wood joists. Set-screws lock into position and prevent shifting after installation. Earthquake structural cable compatible for drop panel ceiling or any other mounting that requires direct support from structural ceilings.

**Safety Labels:** ETL/cETL listed to UL1598 and UL8750. Suitable for dry, damp and wet locations. NYC approved: Calendar #41937.

### COMPATIBILITY



LRCLD9

8"/9" SHALLOW  
LED RETROFIT  
3200LM

Note: Wattage limitations on compatible items must be met.

### FEATURE:

