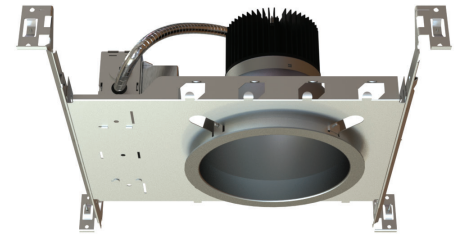
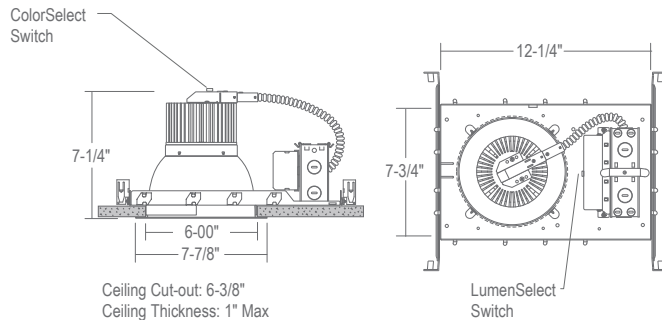


## CH6LS : 6" C-SERIES

LUMEN/COLOR SELECT NEW CONSTRUCTION 1800LM - 4500LM (17W-50W)

- Three LumenSelect options with ColorSelect 3000K, 3500K, 4000K (84CRI) switch
- Heavy-duty, self-flanged, twist and lock reflector
- Soft even lumen distribution



### ORDERING – Example: CH6LS1826UE-D10-EM/CR6L22SW-EMA-TS354

CH6LSxxxx						
LumenSelect Housing	Driver	J-Box	/	Reflector	Reflector Finish	Reflector Option
						ColorSelect

LumenSelect Housing <sup>1</sup>	Reflector <sup>1</sup>	Reflector Finish	Reflector Option	ColorSelect
1800lm (17W) <b>CH6LS1826</b> [Options]	<b>/CR6L22</b>	Satin Haze Reflector/ White Ring <b>SW</b>	None <b>Blank</b>	ColorSelect <b>-TS354</b>
2200lm (22W)			Integral EM <b>-EMA<sup>2</sup></b>	3000K, 3500K, 4000K (84 CRI)
2600lm (28W)		White Reflector/ White Ring <b>WW</b>	Switch	
3000lm (30W) <b>CH6LS3042</b> [Options]	<b>/CR6L36</b>	All Black <b>BB</b>		
3600lm (39W)		Clear Specular Reflector/White Ring <b>CW</b>		
4200lm (48W)		All Satin Haze <b>SS</b>		
3400lm (36W) <b>CH6LS3445</b> [Options]	<b>/CR6L40</b>			
4000lm (44W)				
4500lm (50W)				

#### Options

Driver	J-Box
0-10V Dimming <b>UE-D10</b>	None <b>Blank</b>
GTD Device <b>UE-D10-GTD</b>	Junction Box <b>-CHP</b>
12W Emerg. Back-Up <b>UE-D10-EM</b>	(Chicago Plenum)

CH6LS1826	DRIVER SET LOW	DRIVER SET MID	DRIVER SET HIGH
<b>LUMENS (delivered)</b>	1800	2200	2600
CH6LS3042	DRIVER SET LOW	DRIVER SET MID	DRIVER SET HIGH
<b>LUMENS (delivered)</b>	3000	3600	4200
CH6LS3445	DRIVER SET LOW	DRIVER SET MID	DRIVER SET HIGH
<b>LUMENS (delivered)</b>	3400	4000	4500

<sup>1</sup> Housing must match corresponding Reflector in column to the right.

<sup>2</sup> Only available for EM Housings.

## SPECIFICATION

### Application

Architectural/Commercial-grade recessed LED downlight housing with Lumen/Color Select switch offers added flexibility for optimal light output and ambience in commercial and architectural spaces with medium to high ceilings.

### Mounting

Housing suitable for new construction installations only, supplied standard with (2) 24" adjustable hanger bars with 90° repositioning ability. Suitable for wood & metal joist support systems, and also drywall & T-bar ceilings. Hanger bars equipped with nail-less install 3/4" serrated barbed studs and captive nails, for faster and easier secure mounting in wood joists. Set-screws lock into position and prevent shifting after installation. Earthquake structural cable compatible for drop panel ceiling or any other mounting that requires direct support from structural ceilings.

### LumenSelect

Three different switchable multi-lumen offerings available:

#### CH6LS1826

1800lm (17W), 2200lm (22W), 2600lm (28W)

#### CH6LS3042

3000lm (30W), 3600lm (39W), 4200lm (48W)

#### CH6LS3040

3400lm (36W), 4000lm (44W), 4500lm (50W)

### Driver

120V/277V AC 50/60Hz Electronic Direct Current Class 2. Input current 0.50 Amps at 115VAC. Power Factor > 0.90. Operating Temperature: -20°C to +50°C / -4°F to +131°F. Accessible from above or below ceiling. Uni-Dim™ dimming option (UE-DUN) is a universal dimming system that works with most 3-wire ELV, 2-wire incandescent and 5-wire 0-10V fluorescent dimmers. (-DIN) dimming option smoothly dims down to 5% of initial light output with flicker-free performance. Works with standard incandescent dimmers. Standard 0-10V works with most 5-wire, 0-10V dimmers. Factory qualified for use with Leviton IP710-DLZ.

### Emergency Options

Emergency LED Battery Back-up available, remotely mounted adjacent to housing by installer. When AC power fails, the device immediately switches to the emergency mode, operating the LEDs for a minimum of 90 minutes. Remote test switch and plate cover included. Optional Generator Transfer Device switches the driver to auxiliary generator power during the loss of normal AC power, (recommended for applications requiring individual circuit switching).

### Color Temperature

Available in ColorSelect 3000K, 3500K, 4000K (84 CRI).

### Insulation Contact

Non-IC rated housing must be kept 3" from loose-fill insulation. IC rated option for direct insulation contact.

### Power Connection

LED lamp array is replaceable via on board quick disconnect terminal. Meets CA Title 24 Requirements and other standards restricting the use of Medium Base or Bi-Pin Sockets.

### Thermal Management

Heat dissipation facilitated by a large exposed integral aluminum heat sink to maximize heat dissipation in an open-air environment. The recommended ambient temperature should be below 35°C to achieve a minimum L70 life of 50,000 hours according to the LM80 standard.

### Reflector

Field adjustable twist and lock reflector is easily removable for both Non-IC and IC rated housings to provide quick access to LED lamp array. Frosted polycarbonate lens pre-installed on reflector unifies diode sources and protects diodes from dust and particles from front of aperture. Optional reflector (-EMA) features integral EM switch for 12W emergency backup (UE-D10-EM).

### Reflector Finish

1-piece, self-flanged, dual reflector LED design enables a clean trim finish without secondary trim ring. Heavy gauge aluminum reflector prevents ugly dents during shipping & installation. Deeply mounted singular LED provides 50° visual cutoff. Available in Satin Haze Reflector/White Finish, White Reflector/White Finish, All Black, Clear Specular Reflector White Ring, and All Satin Haze.

### Junction Box

16-gauge pre-wired galvanized steel Junction Box, 26 cubic-inch for a maximum of (8) #12 AWG wires. Furnished with (7) 1/2" knockouts. Strain clamps to install or remove covers for easy access and ground wire. (-CHP) option is Chicago Plenum, air-tight Junction Box.

### Airflow

Airtight reflector design is designed to restrict air flow from room into plenums in compliance to the WSEC - Washington State Energy Code, (Less than 2.0 CFM -Cubic Feet per Minute).

### Certifications and Listings

cETLus listed. Suitable for dry, damp, and wet locations. NYC approved. Calendar #41937. Conforms to City of Chicago Environmental Air CCEA-200 with Section 18-27-300.22 and special requirements Section 14-20-210C-4. Assembled in USA.

### Caution

LITON recommends use of surge protectors on the power entering LED Housings. Surge damage is not covered by warranty. (+1KV). Fixtures must be grounded in accordance with national, state and/or local electrical codes. Failure to do so may result in serious personal injury.

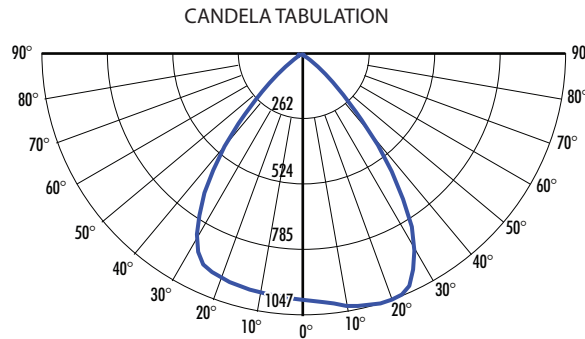
### Warranty

Covered by a 5-Year Warranty to be free of defects in materials and craftsmanship. Recommended for applications where ambient temperatures do not exceed 35°C, installations exceeding this temperature will result in reduced LED lamp life and a voided warranty.

## PHOTOMETRY

### CH6LS1826UE-D10\_CR6L22CW-TS40\_LOW (1800lm, 17W, 4000K)

System Power:	17.07W	MULTIPLIERS	
Test Date:	09/2023	REFLECTOR FINISH	
Beam Angle 50%:	68.9°	CW :	1.00
Field Angle 10%:	94.7°	SS :	0.90
Color Temperature:	3893K	SW :	0.88
CRI:	82.6	WW :	0.81
R9 Value:	11.44	CCT	
Lumens Delivered:	1873	2700K :	1.04
CBCP:	1046.9	3000K :	1.01
Power Factor:	0.99	3500K :	1.12
		4000K :	1.00

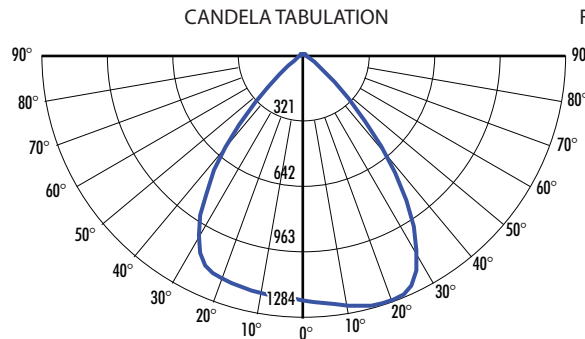


FOOTCANDLE DISTRIBUTION

Height	Beam Diameter	FC
8.0'	10.98'	15.32
10.0'	13.72'	9.81
12.0'	16.46'	6.84
14.0'	19.21'	5.02
16.0'	21.95'	3.85

### CH6LS1826UE-D10\_CR6L22CW-TS40\_MID (2200lm, 22W, 4000K)

System Power:	21.89W	MULTIPLIERS	
Test Date:	09/2023	REFLECTOR FINISH	
Beam Angle 50%:	69.0°	CW :	1.00
Field Angle 10%:	95.1°	SS :	0.90
Color Temperature:	3899K	SW :	0.88
CRI:	82.4	WW :	0.81
Lumens Delivered:	2313	CCT	
CBCP:	1283.57	2700K :	1.04
Power Factor:	0.99	3000K :	1.01
		3500K :	1.12
		4000K :	1.00

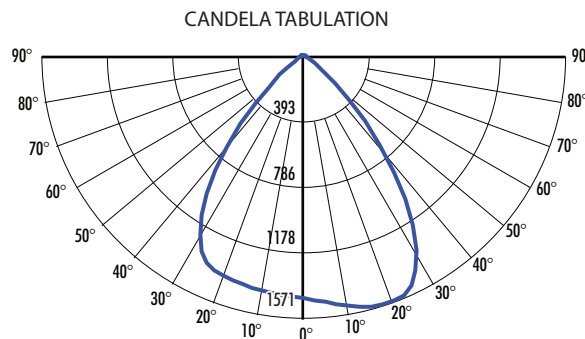


FOOTCANDLE DISTRIBUTION

Height	Beam Diameter	FC
8.0'	10.99'	18.86
10.0'	13.75'	12.07
12.0'	16.49'	8.41
14.0'	19.24'	6.18
16.0'	21.99'	4.73

### CH6LS1826UE-D10\_CR6L22CW-TS40\_HIGH (2600lm, 28W, 4000K)

System Power:	27.89W	MULTIPLIERS	
Test Date:	09/2023	REFLECTOR FINISH	
Beam Angle 50%:	68.7°	CW :	1.00
Field Angle 10%:	94.9°	SS :	0.90
Color Temperature:	3903K	SW :	0.88
CRI:	82.2	WW :	0.81
Lumens Delivered:	2803	CCT	
CBCP:	1571.1	2700K :	1.04
Power Factor:	0.99	3000K :	1.01
		3500K :	1.12
		4000K :	1.00



FOOTCANDLE DISTRIBUTION

Height	Beam Diameter	FC
8.0'	10.93'	22.83
10.0'	13.67'	14.61
12.0'	16.40'	10.22
14.0'	19.14'	7.51
16.0'	21.87'	5.75